

# Virtual COM port Print User's guide ( Application Software ) User Install/Setting Guide

**SEWOO POS Printer**

Rev. 2.10

## Table of Contents

1. Manual guide.....	2
2. Operating environment.....	2
2.1. Supported platform and interface .....	2
3. How to install the program.....	3
4. How to Uninstall a program .....	10
4.1. Explanation .....	10
4.2. How to delete .....	10
5. Program Description.....	16
5.1. Open service .....	16
5.2. Service Settings.....	17
5.3. Service termination.....	18
6. How to install Virtual COM Driver in Windows XP .....	19
6.1. How to install .....	19
7. Required check items for installation/Uninstallation .....	25
7.1. Required Checks .....	25

## 1. Manual guide

This manual is software developed to enable printing with a USB connected printer if there is an application that prints using the virtual COM port.

Please proceed with a USB printer connected before installing the software.

## 2. Operating environment

### 2.1. Supported platform and interface

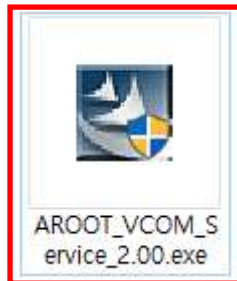
Platform : Windows OS ( Windows XP or later )

Printer's interface : USB

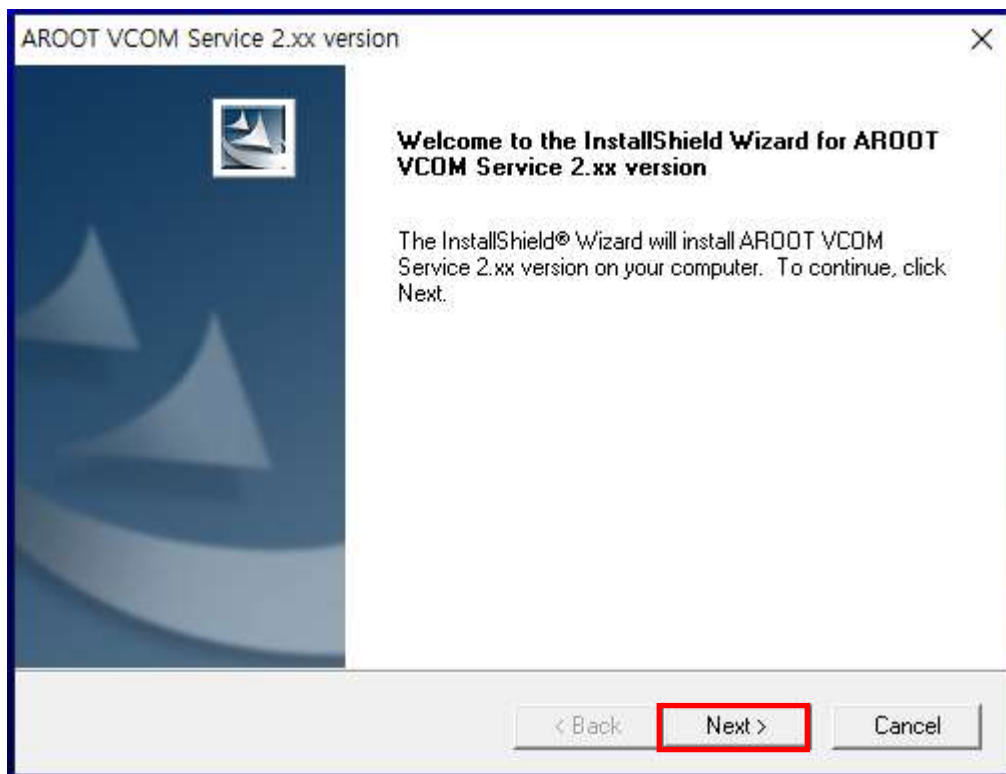
Printer's emulation : ESC/POS.

### 3. How to install the program

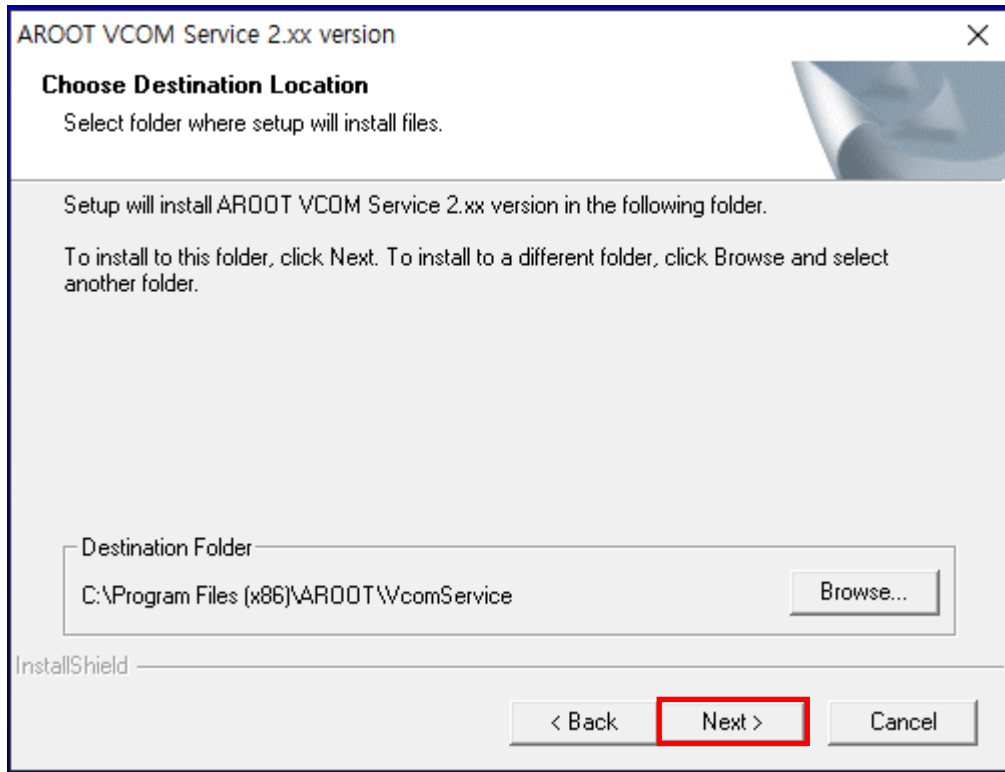
#### 3.1. Execute the install program(AROOT\_VCOM\_Service\_2.xx.exe).



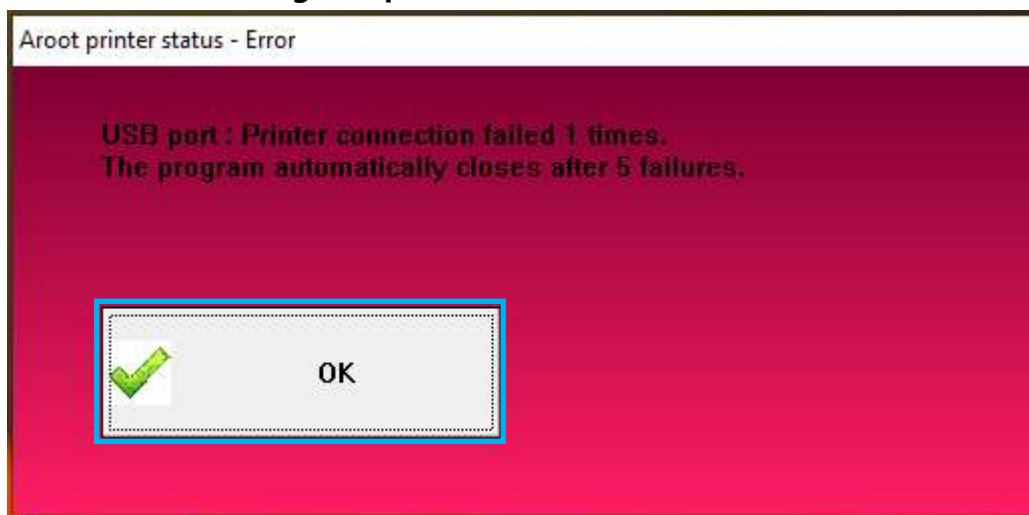
#### 3.2. Click the "Next >" button.



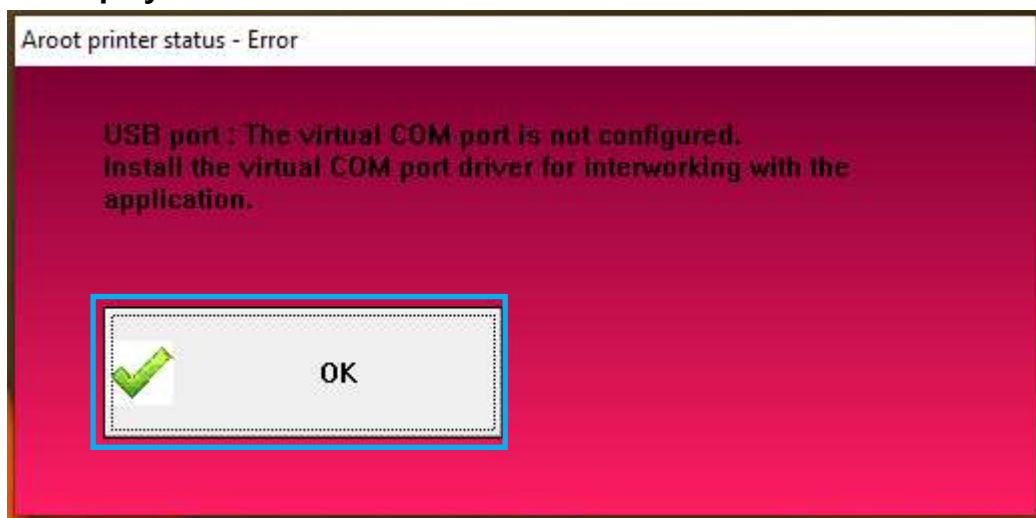
### 3.3. Click the “Next >” button after check the installation folder.



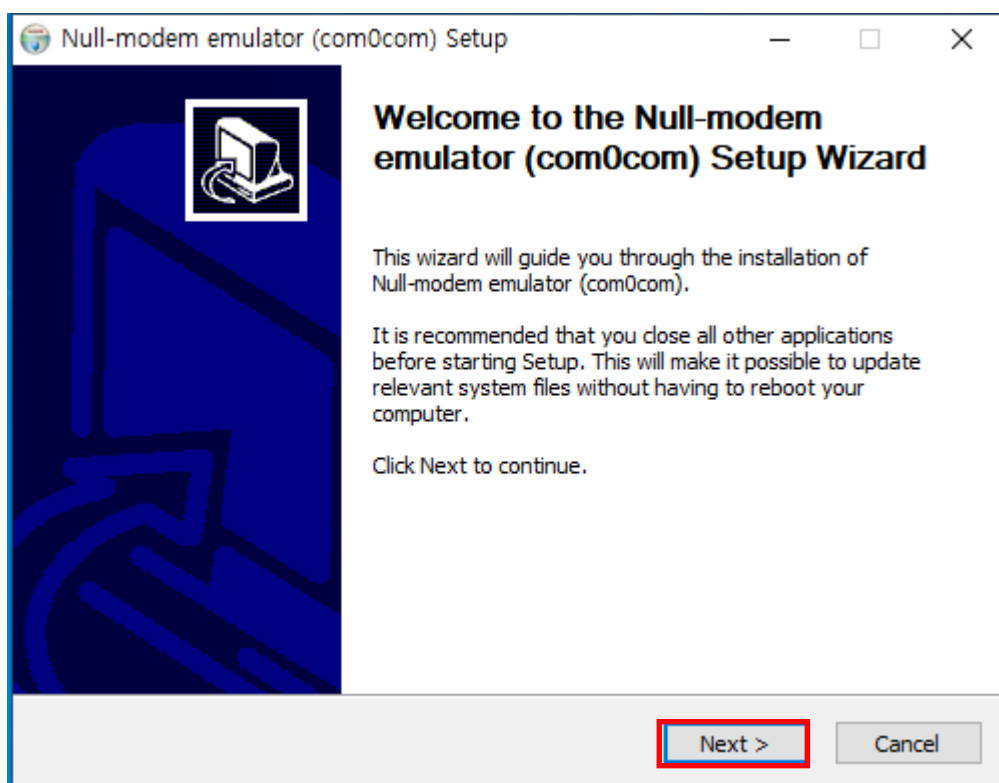
### 3.4. If the USB Printer is not connected, the following dialog displayed. After connecting the printer, click the “OK” button.



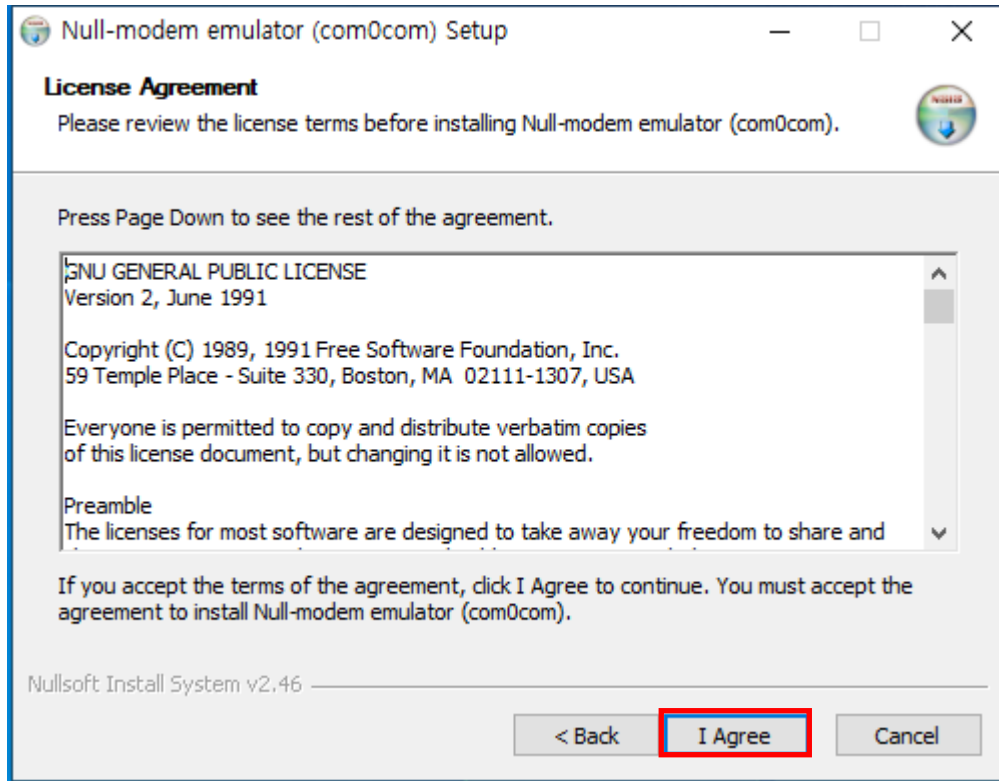
- 3.5. If the virtual COM port driver is not installed, the following dialog displayed. Click the “OK” button to install the driver.



- 3.6. On the virtual COM port driver installation screen, click the “Next >” button.

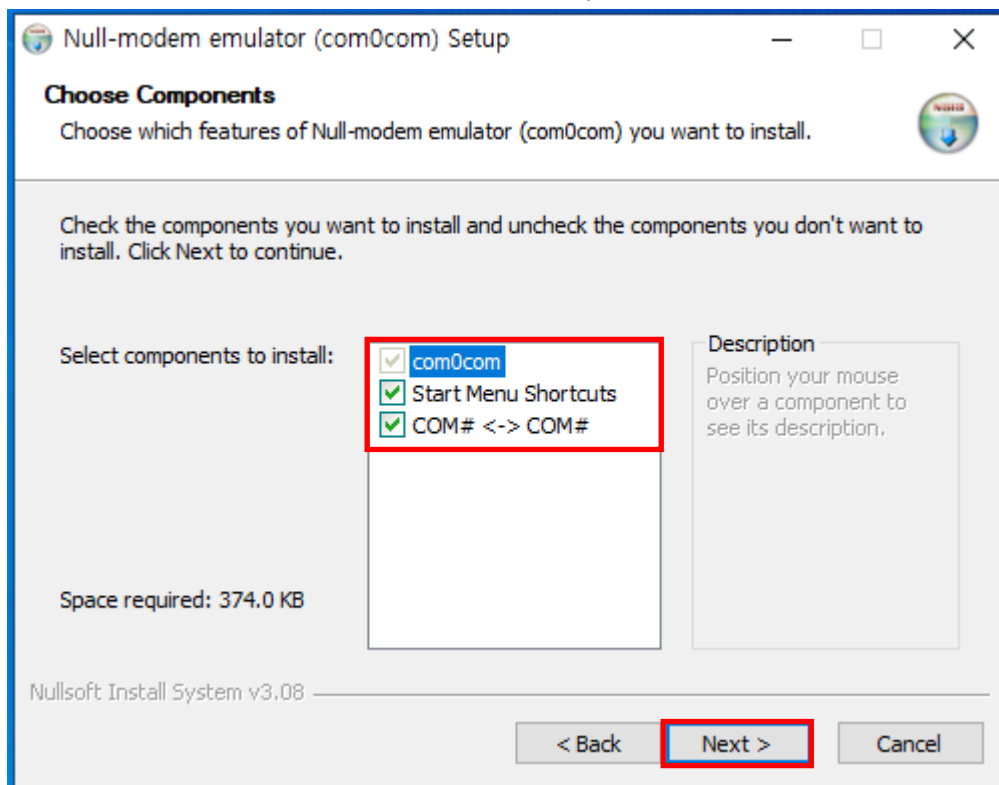


## 3.7. Click the “I Agree” button one the License Agreement screen.



## 3.8. Click the “Next >” button.

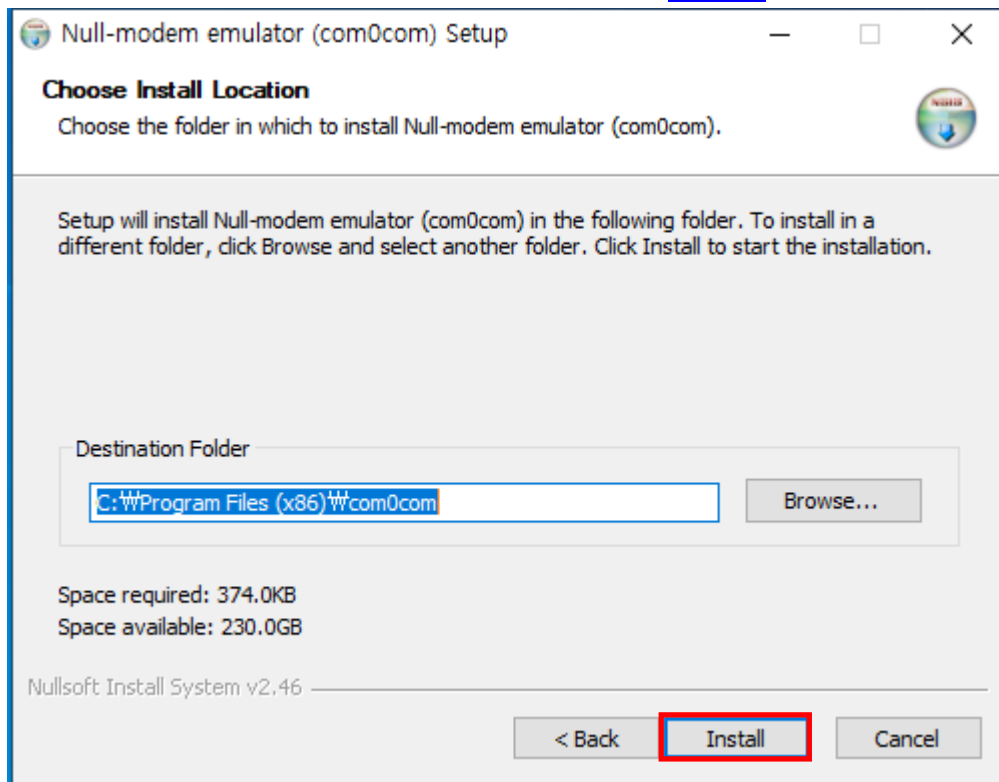
If “COM# <-> COM#” is not selected, select it and click the “Next >” button.



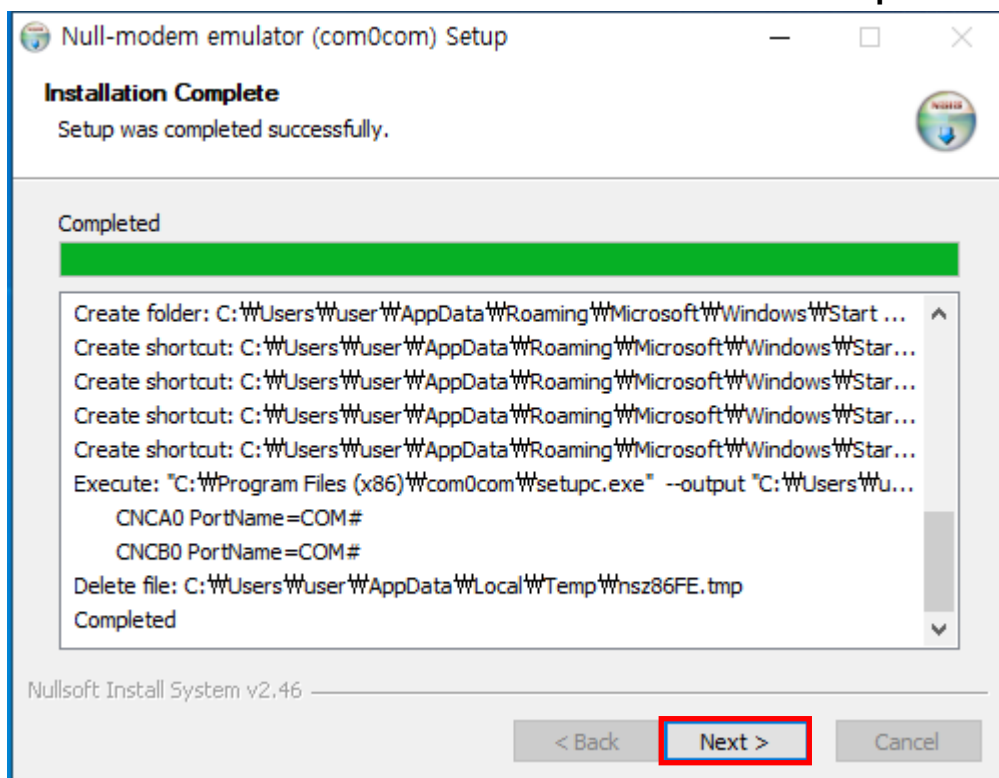
### 3.9. After selecting the folder to be installed, click the “Install” button.

After several installation screens are shown, they disappear automatically.

**For Windows XP, refer to installation in [item 6](#).**

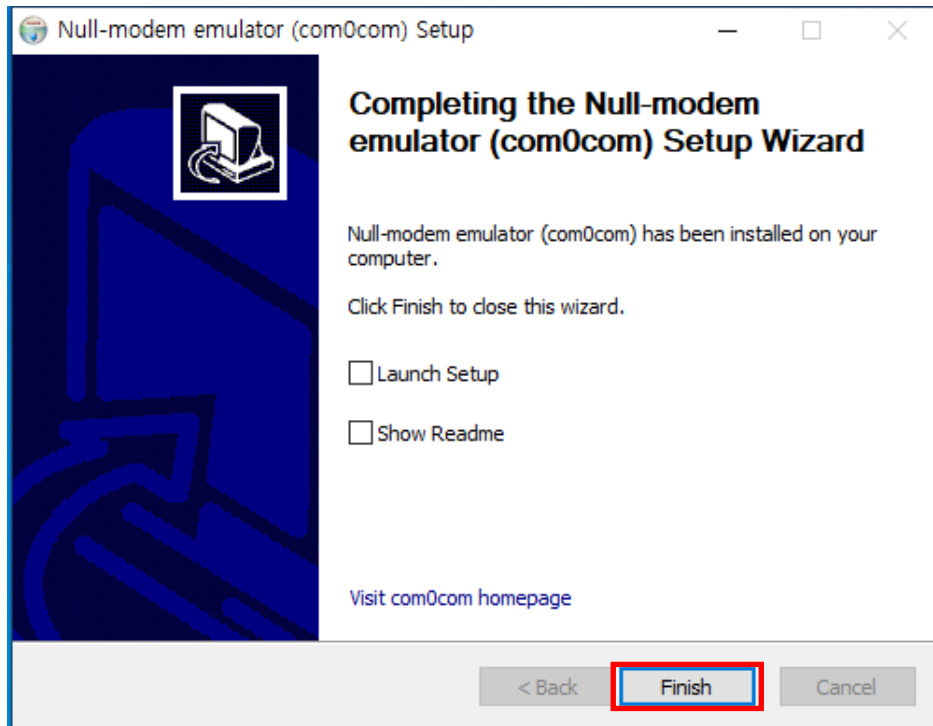


### 3.10. Click the “Next >” button on the installation complete screen.

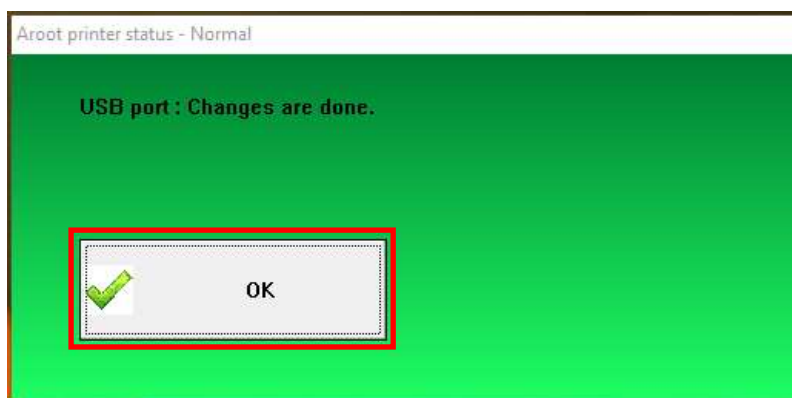


3.11. Click the “Finish” button on the complete screen to exit.

In the case of Windows XP, 7 if the virtual port driver is being installed, click the “Finish” button after the installation is complete. Installation may take a long time depending on the OS being installed.

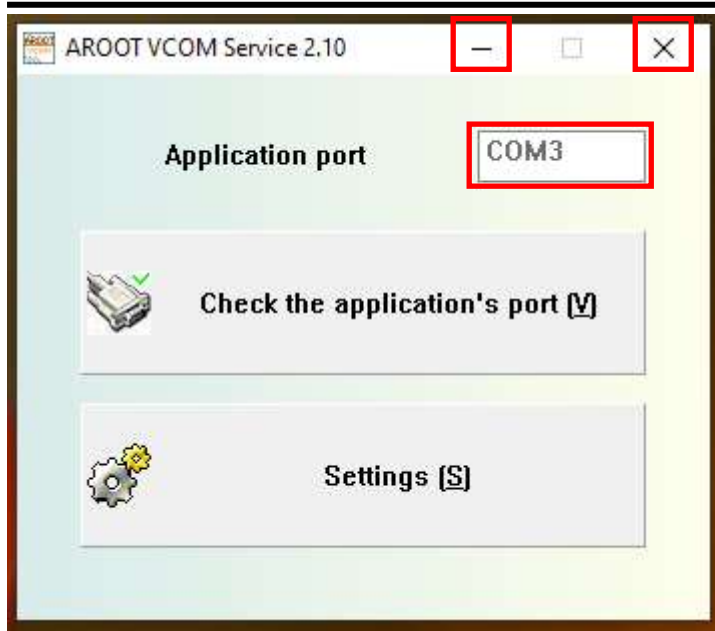


3.12. If the software is installed/set normally, you can see the below and click the “OK” button.

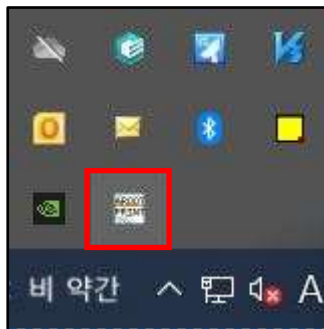


3.13. When the installation is complete, you will see the added port as shown below. Click the Minimize button or the Quit button to move the launcher to the Windows tray. In the case below, “COM3” port has been added, and this port can be used by applications. To check whether or not it is used, you can check whether it is printed by clicking the “Check the application’s port (V)” button.





3.14. If the print service is running as shown below when checking the Windows tray, the installation has been completed normally.



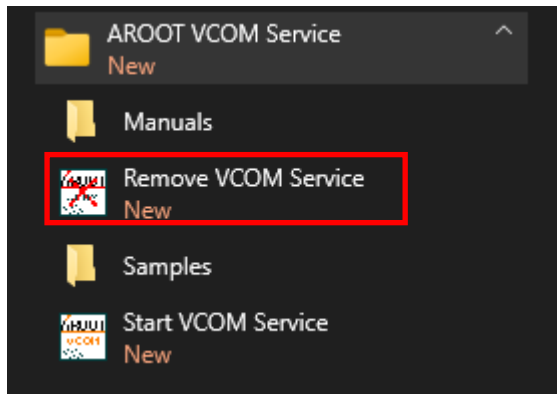
## 4. How to Uninstall a program

### 4.1. Explanation

- If your application does not require printing through the COM port, uninstall the installed software and virtual COM port drivers.

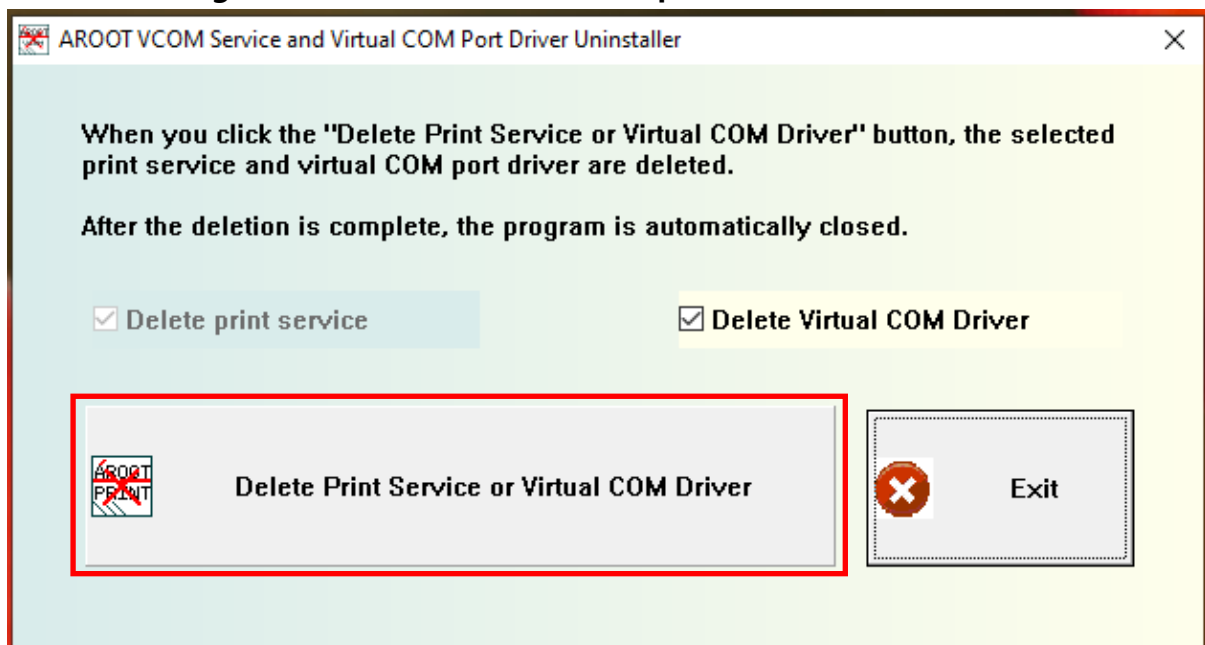
### 4.2. How to delete

4.2.1. Click the "Remove VCOM Service" shortcut on the Windows Start menu or run the uninstall program(VcomUninstaller.exe) in the installed folder.

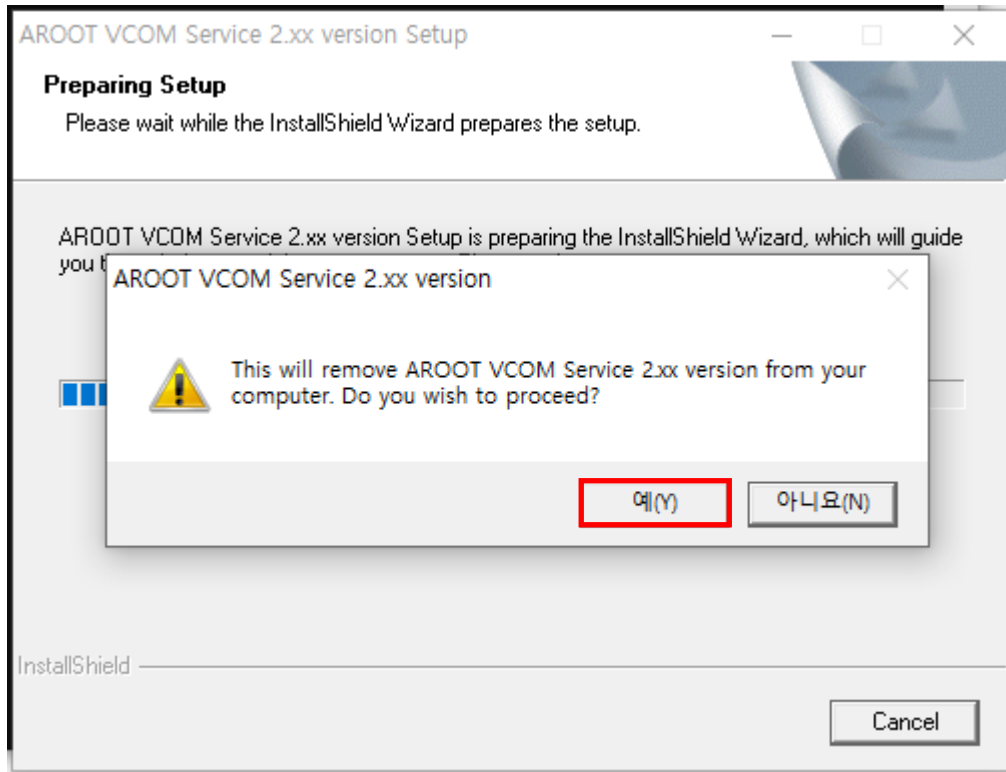


4.2.2. Click the "Delete Print Service or Virtual COM Driver" button.

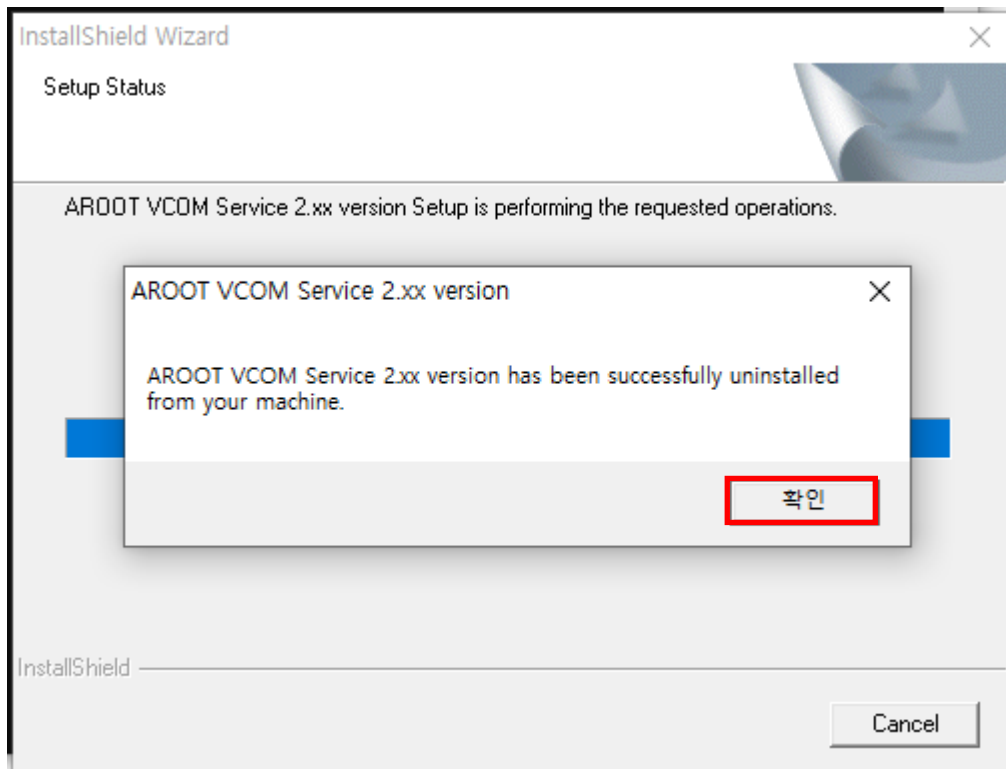
Deleting the Virtual COM driver is optional.



### 4.2.3. When the delete screen is displayed, click “Yes” button.



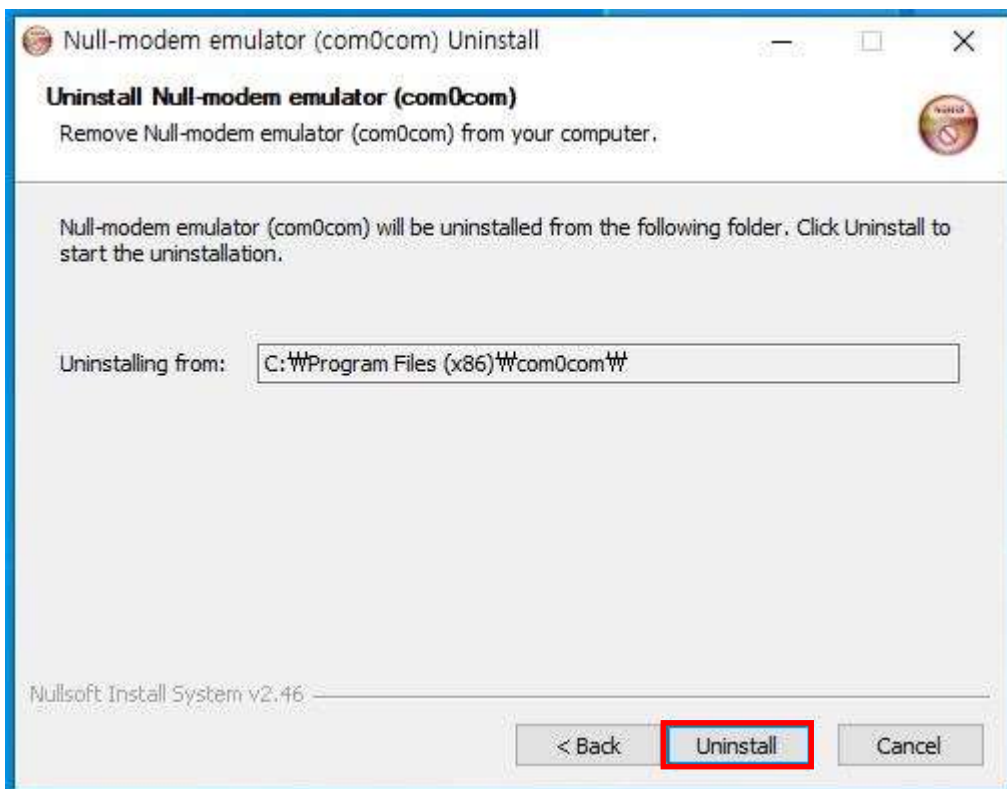
### 4.2.4. When the deletion complete screen appears, click “OK” button.



### 4.2.5. Click the “Next >” button on the deletion screen.

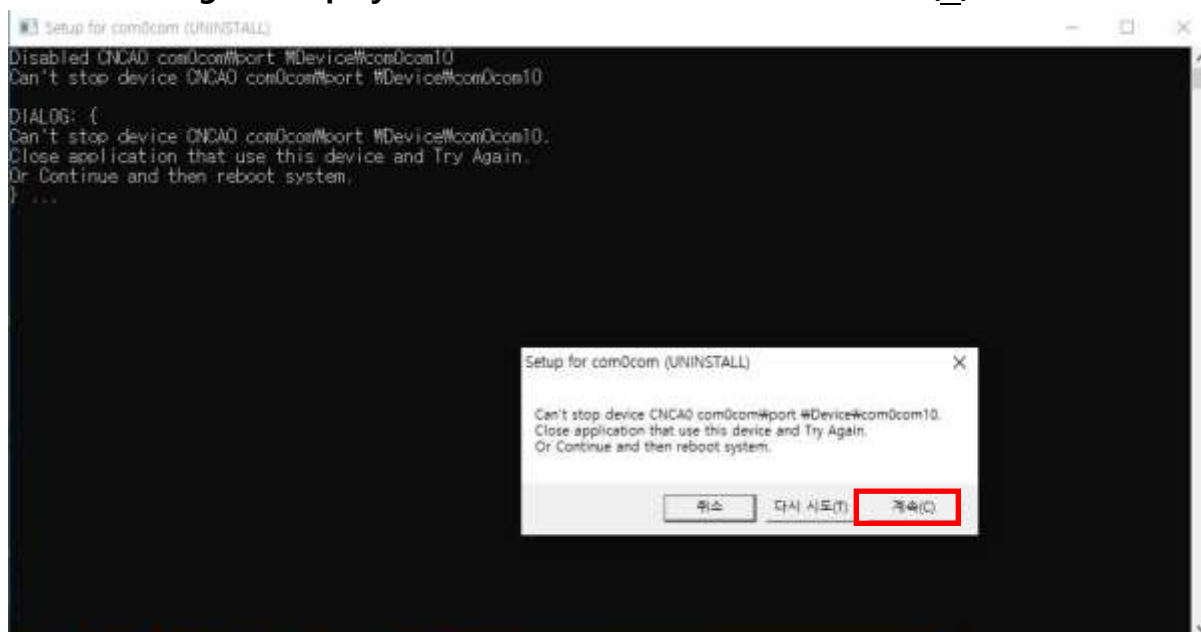


### 4.2.6. The folder you want to delete is displayed and click the “Uninstall” button.

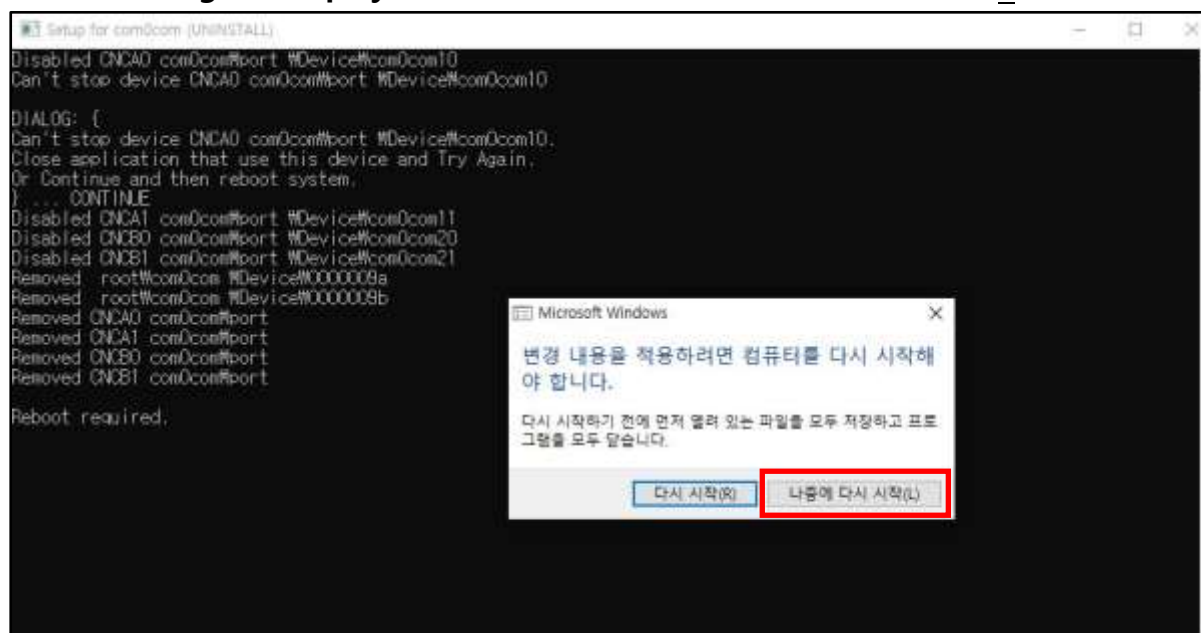


If the port is not being used by an application, go to screen 5.2.9.

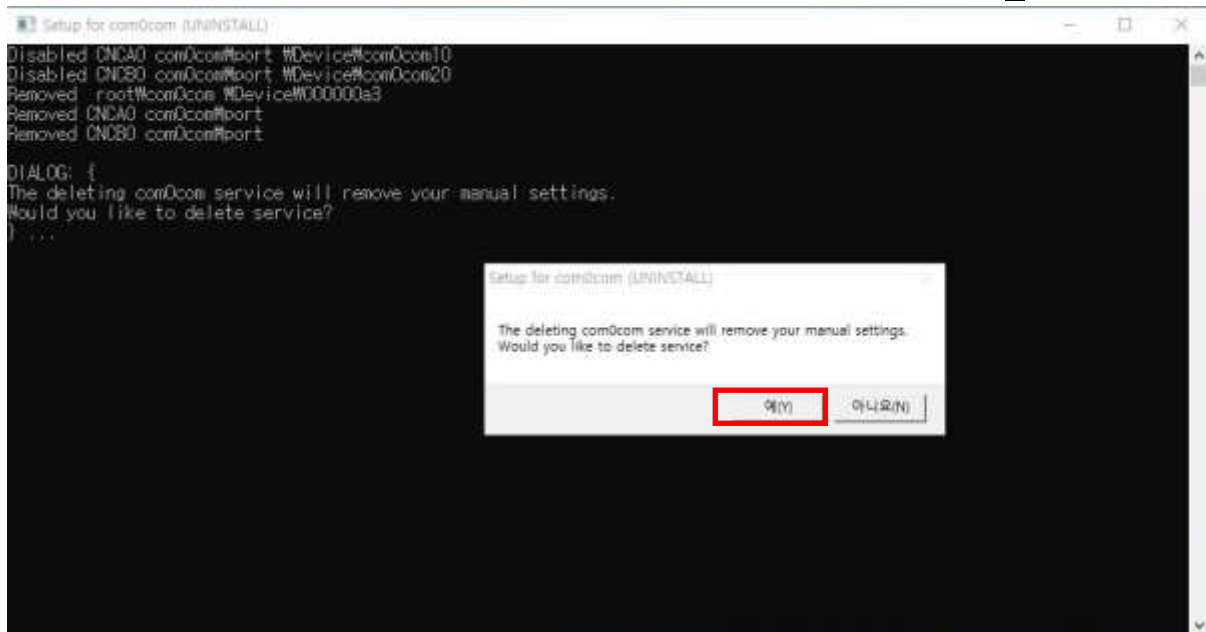
4.2.7. If the application is using an existing virtual COM port, the following message is displayed. In this case, click the “Continue(C)” button.



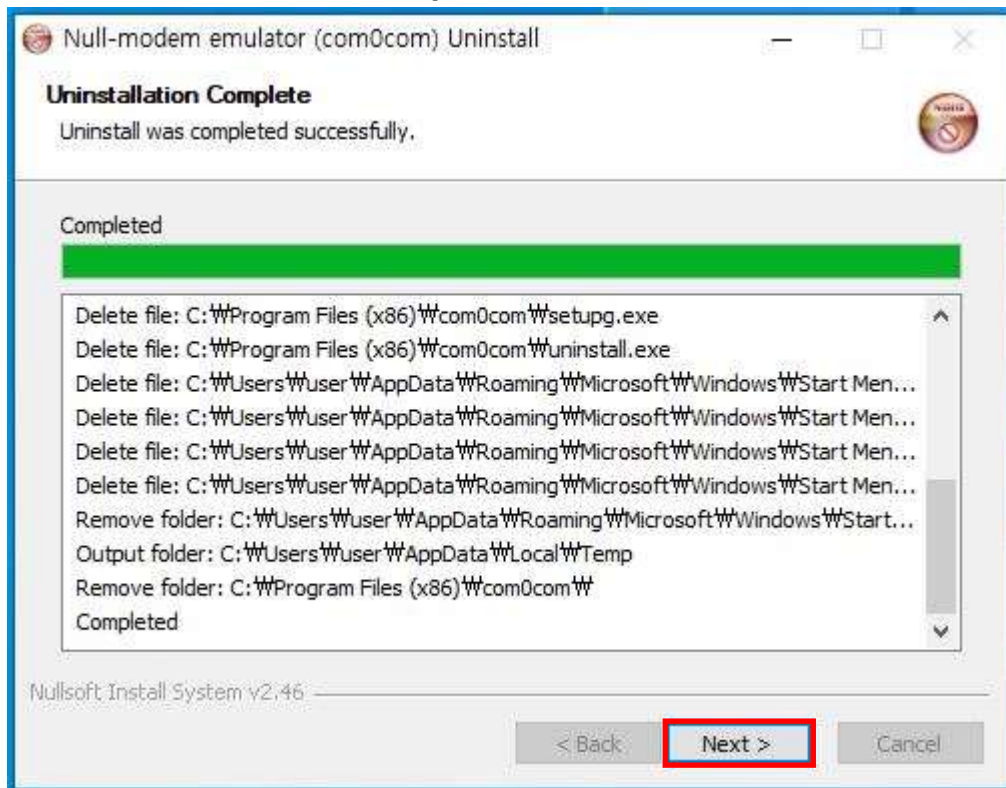
4.2.8. If the application is using an existing virtual COM port, the following message is displayed. In this case, click the “Restart Later(L)” button.



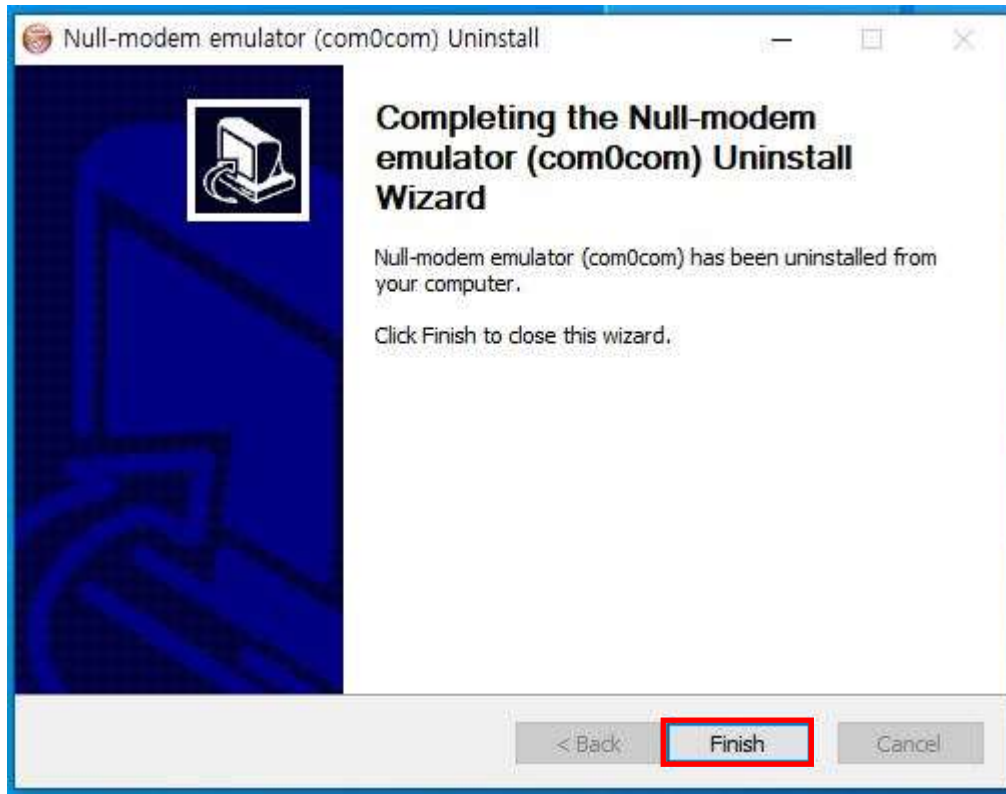
4.2.9. If the application is not using an existing virtual COM port, the following message is displayed. In this case, click the “Yes(Y)” button.



4.2.10. On the deletion completion screen, click the “Next >” button.



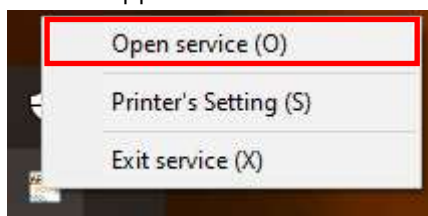
4.2.11. Click the “Finish” button on the deletion completion screen to exit.



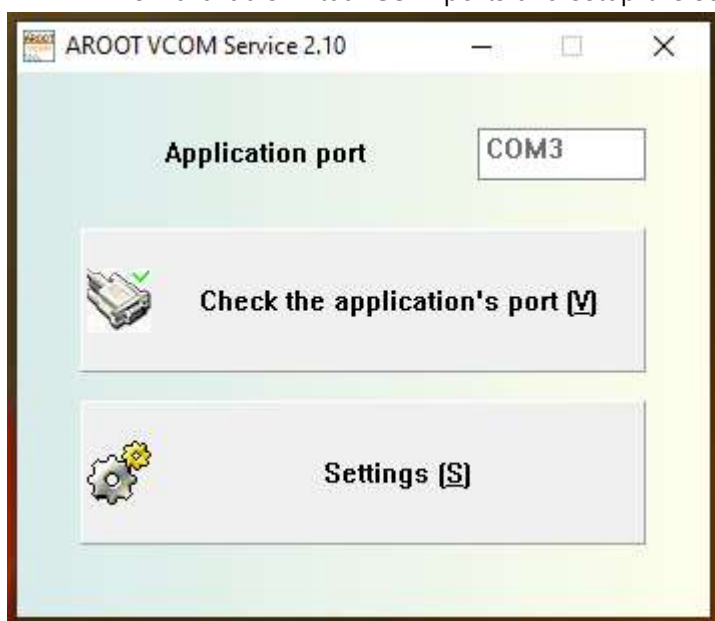
## 5. Program Description

### 5.1. Open service

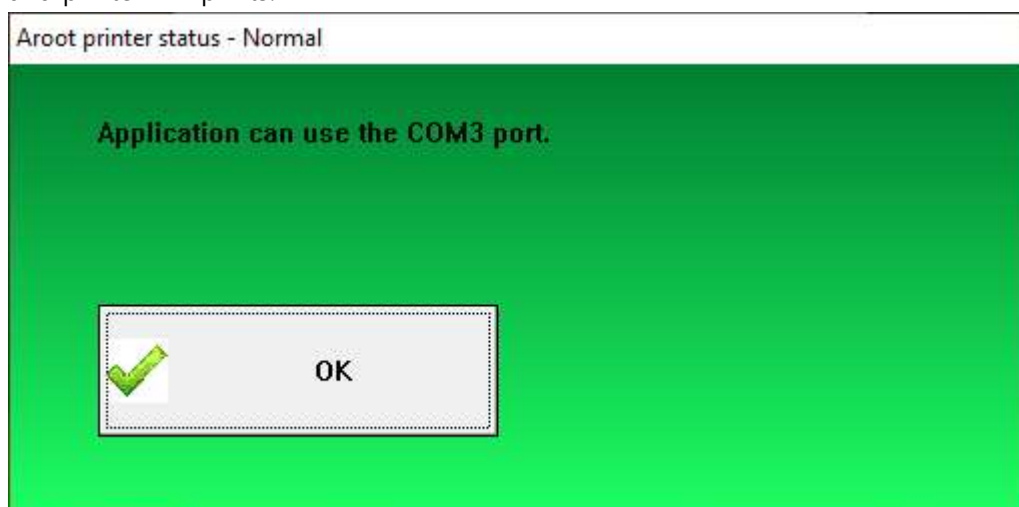
- This is a menu that appears when you right-click a program on the Windows tray icon, and when you click the "Open service (O)" button, a service screen dialog window appears.



- View available virtual COM ports and setup the settings.



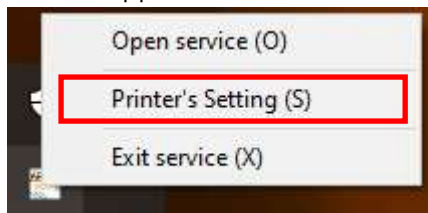
- When the "Check the application port (V)" button is clicked, it will be printed if the port is available. If the port is not being used by the application, the following message appears and printer will prints.



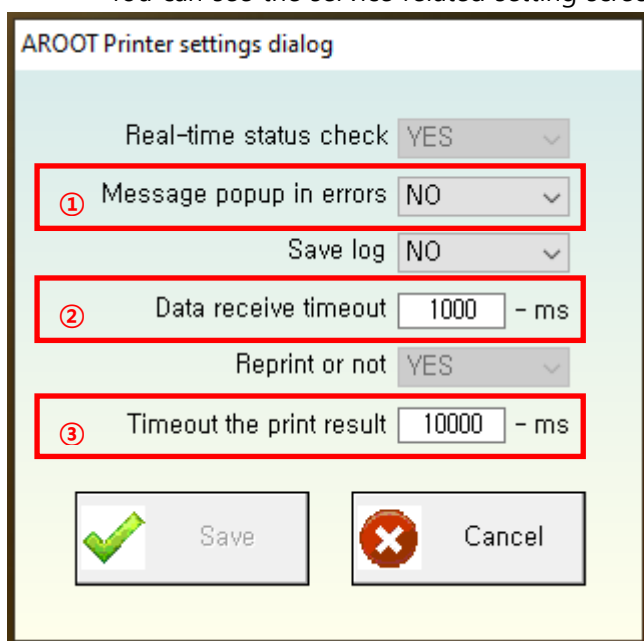


## 5.2. Service Settings

- This is a menu that appears when you right-click a program on the Windows tray icon, and when you click the "Printer's Settings (S)" button, the service setting dialog window appears.



- You can see the service related setting screen. You can set the related information.



- ① : Set whether or not to pop-up an error message when an error occurs.
- ② : Set the input data receive timeout when printing.
- ③ : Set the timeout to check the printing results.



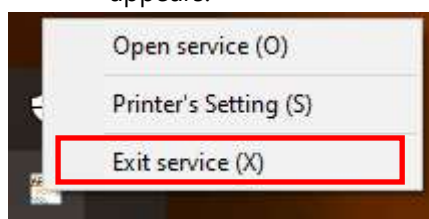
→ Cover open failure



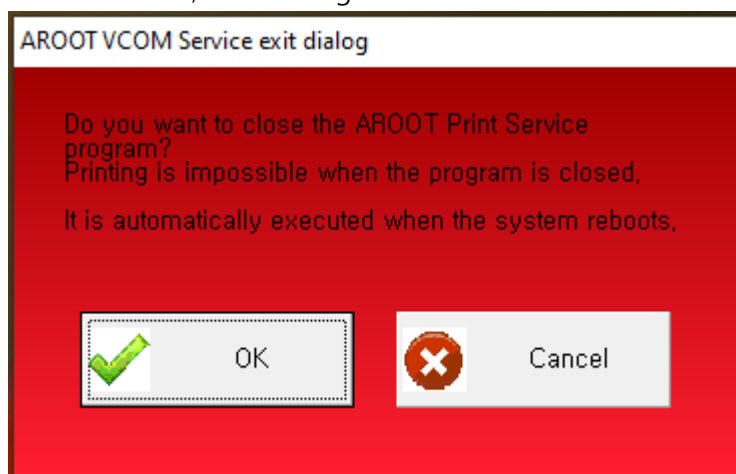
→ No erros

### 5.3. Service termination

- This is a menu that appears when you right-click a program on the Windows tray icon, and when you click the "Exit service (X)" button, the service termination dialog window appears.



- You can see the service termination status screen. Clicking the "OK" button terminates the service, and clicking the "Cancel" button cancels the service termination.

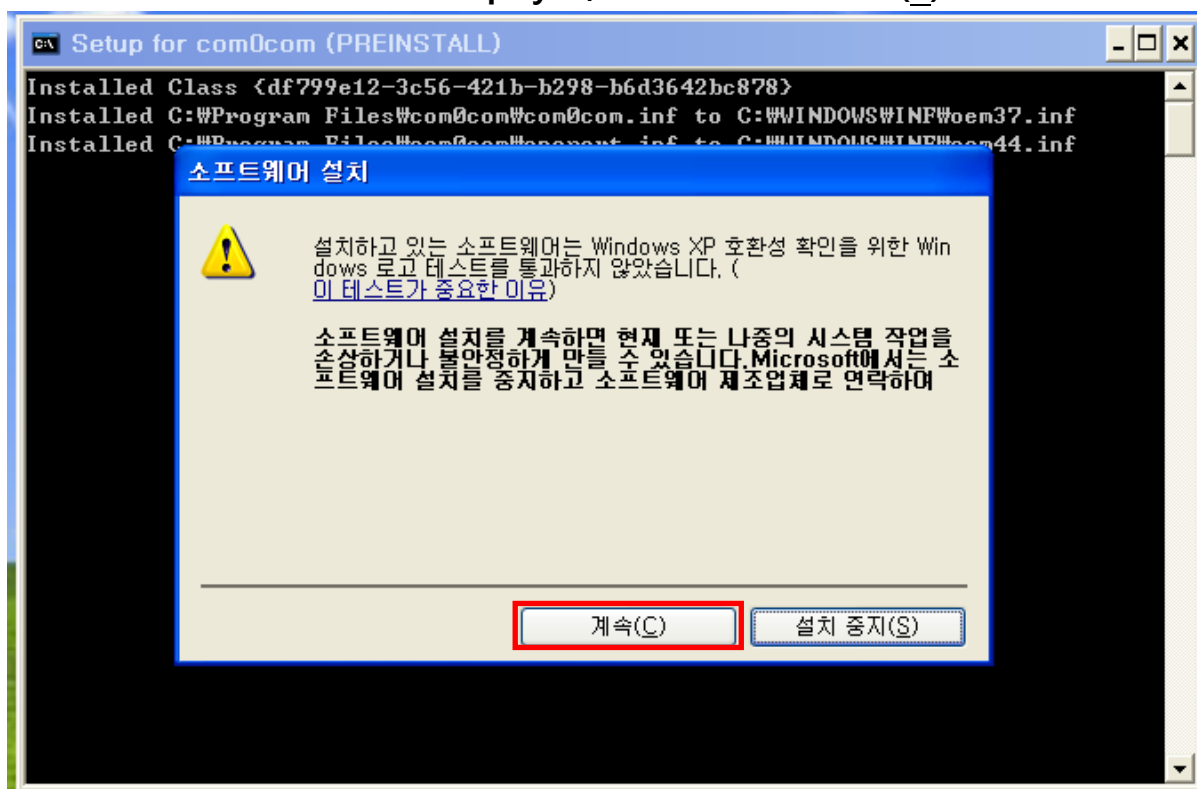


## 6. How to install Virtual COM Driver in Windows XP

- How to install COM port driver in Windows XP.
- This is a description of the installation method after clicking the "Install" button in 3.9.

### 6.1. How to install

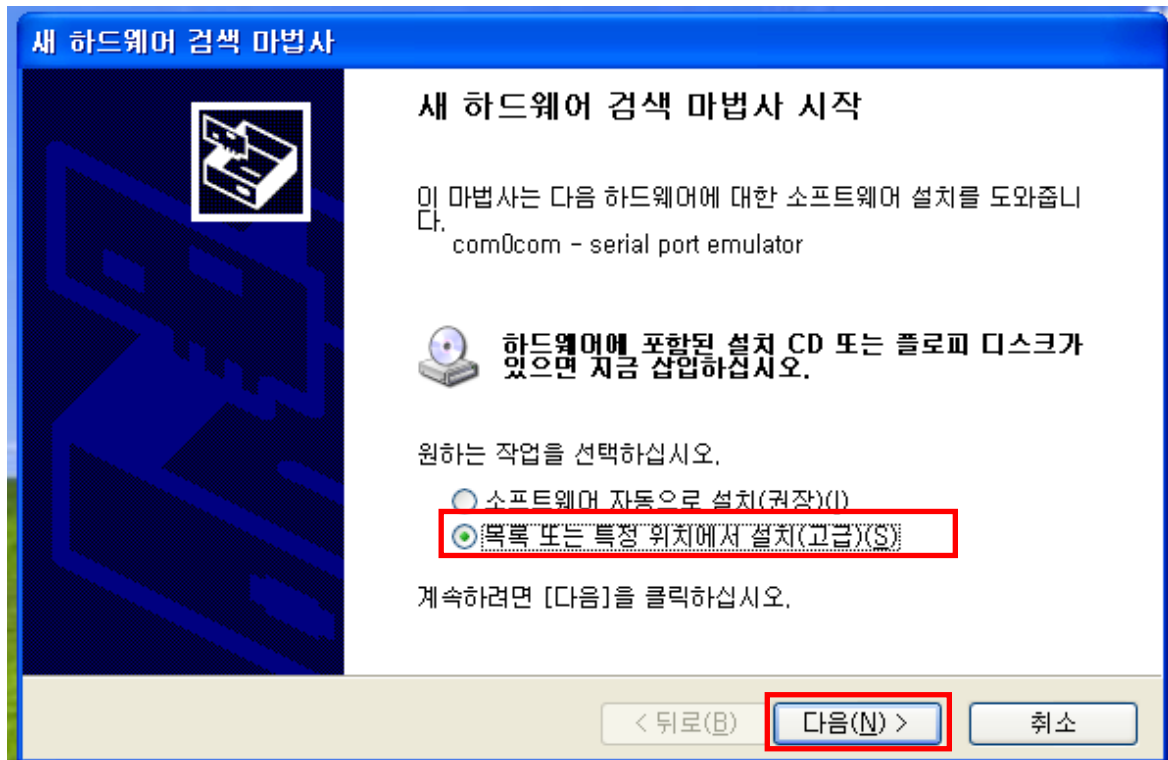
6.1.1. If the below screen is displayed, click the "Continue(C)" button.



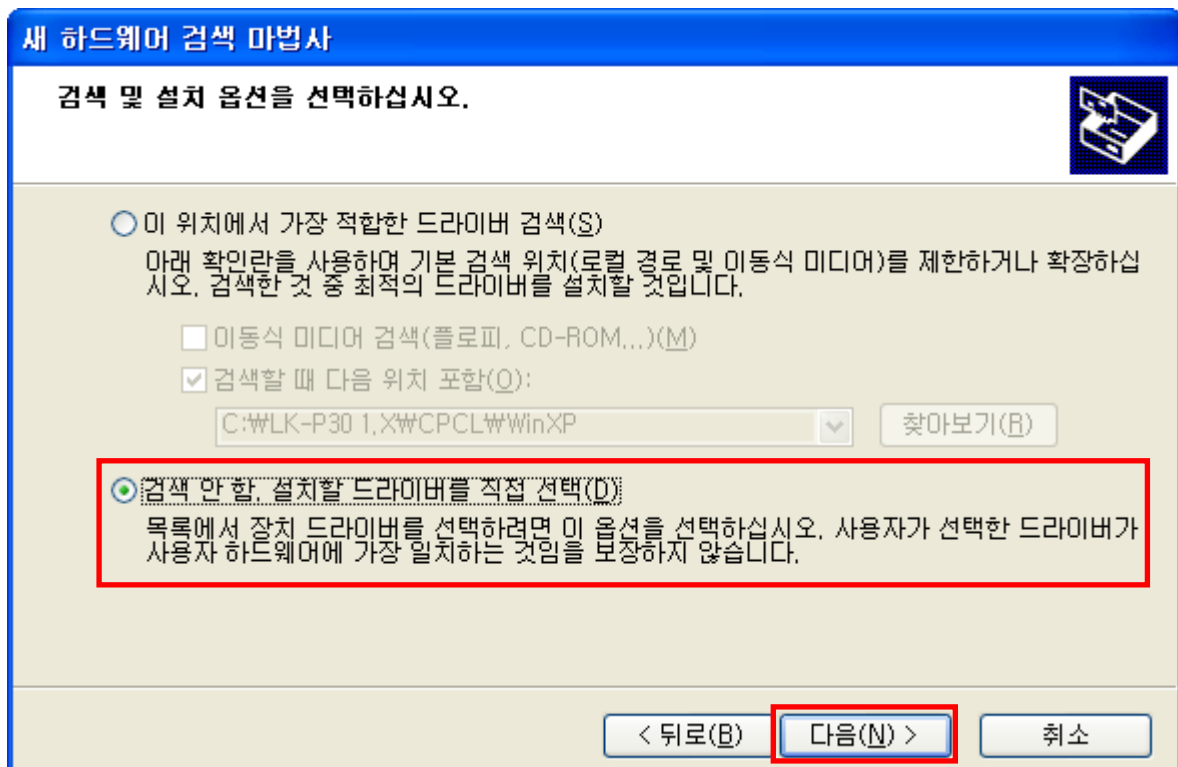
6.1.2. The Windows tray icon shows as below. After a few moments, the Found New Hardware Wizard starts..



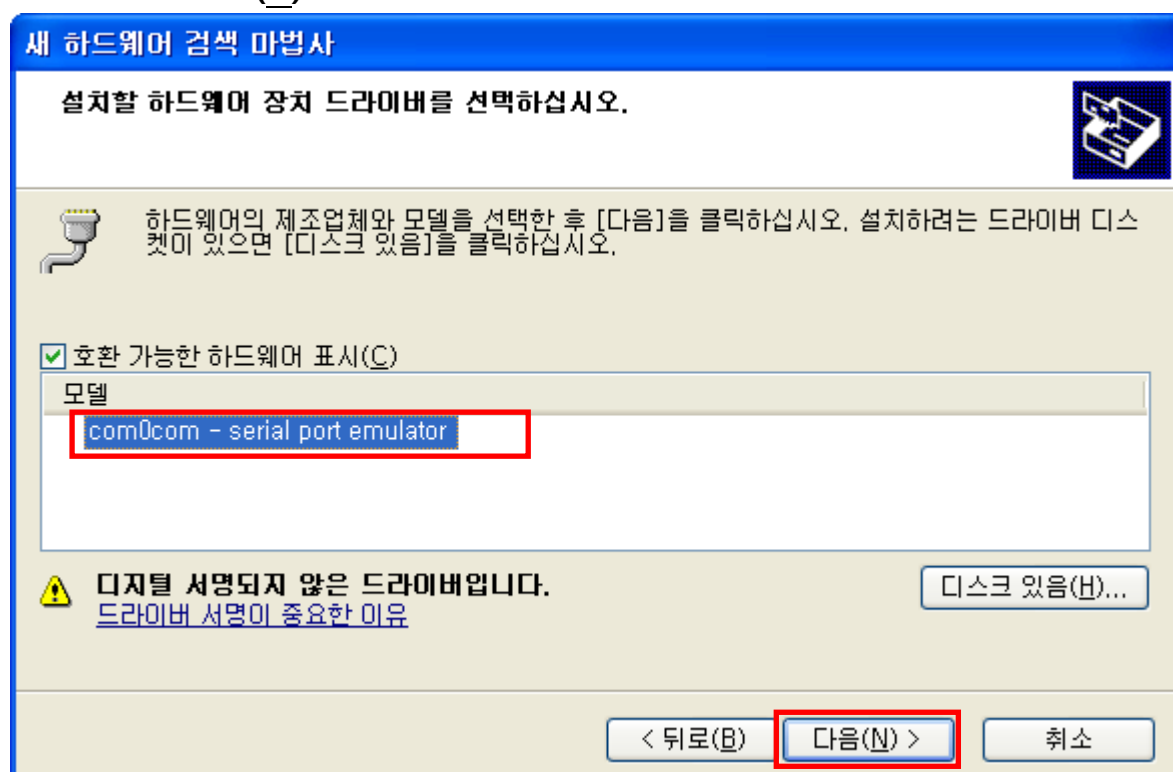
6.1.3. After selecting as shown in the below screen, click the “Next(N) >” button.



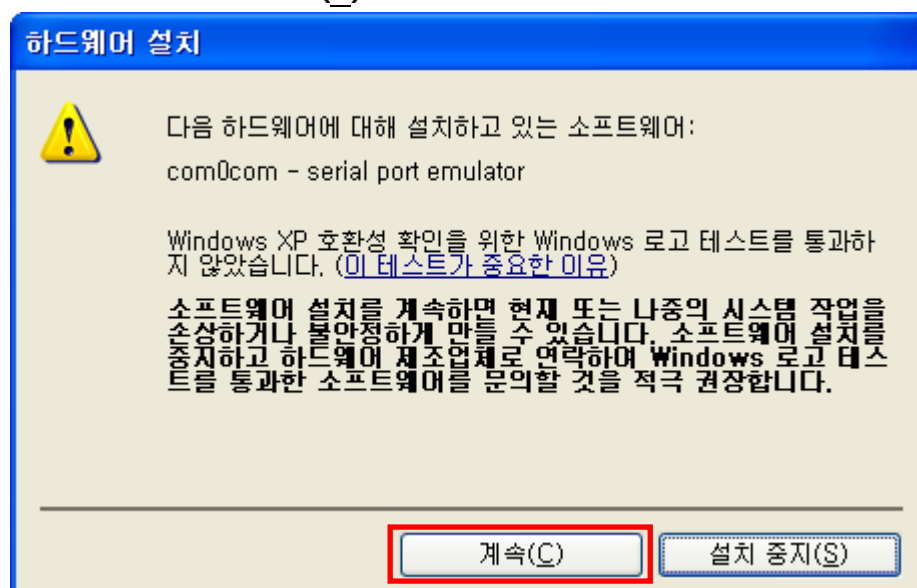
6.1.4. After selecting as shown in the below screen, click the “Next(N) >” button.



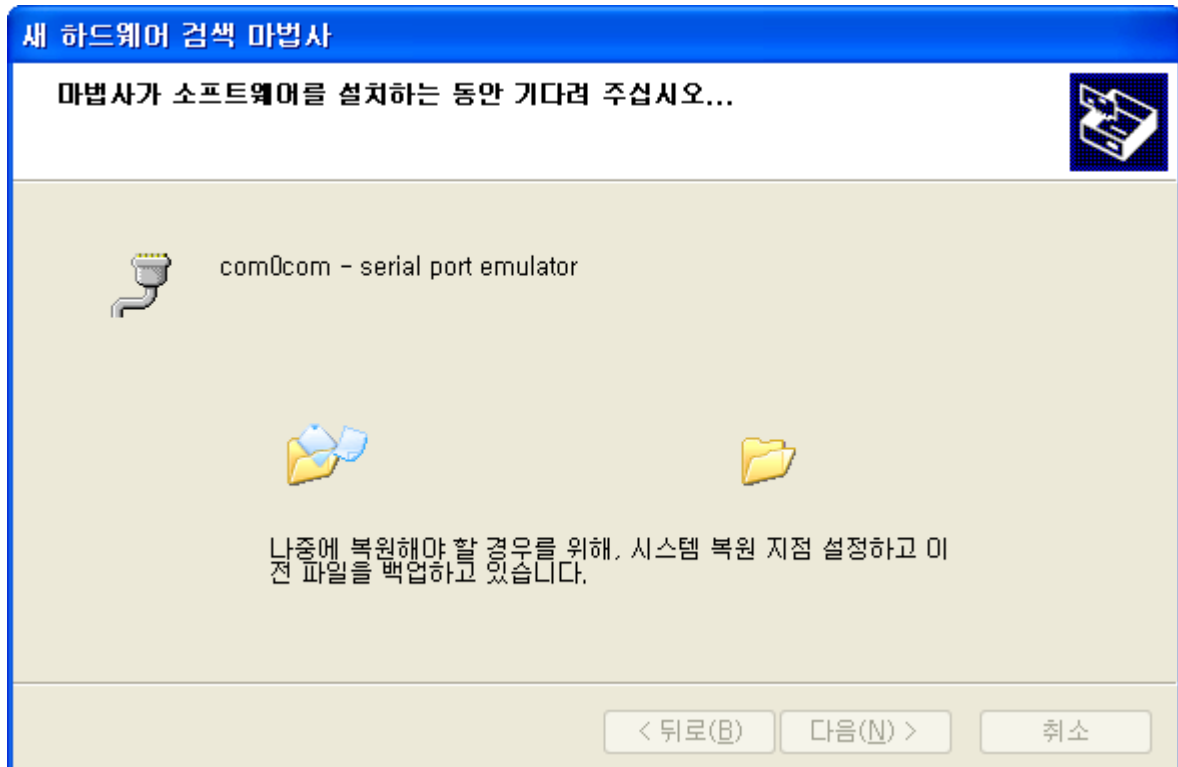
6.1.5. After selecting the driver to install as shown in the below screen, click the "Next(N) >" button.



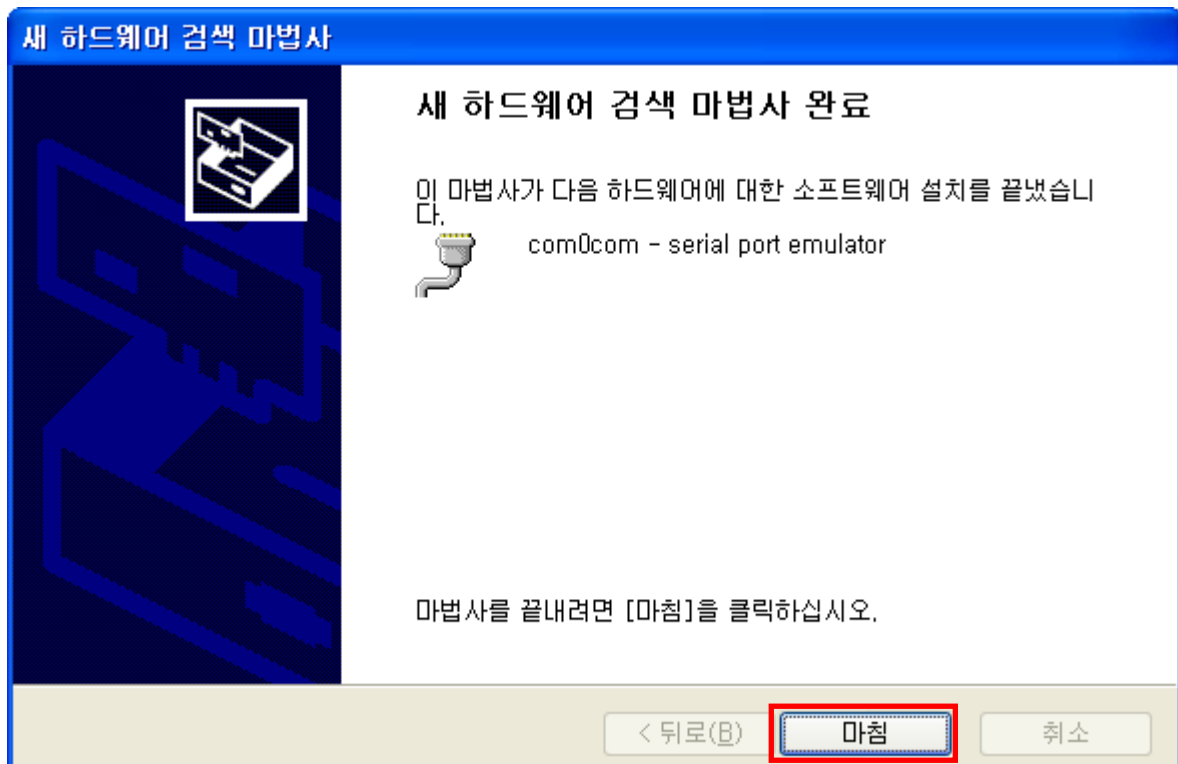
6.1.6. When the compatibility check window appears as shown below, click the "Continue(C)" button.



6.1.7. The installation screen will appear as shown below.

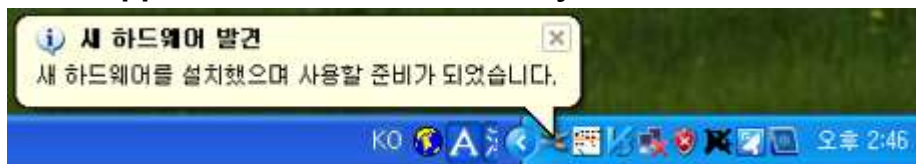


6.1.8. When the installation complete screen appears as shown below, click the “Finish” button.

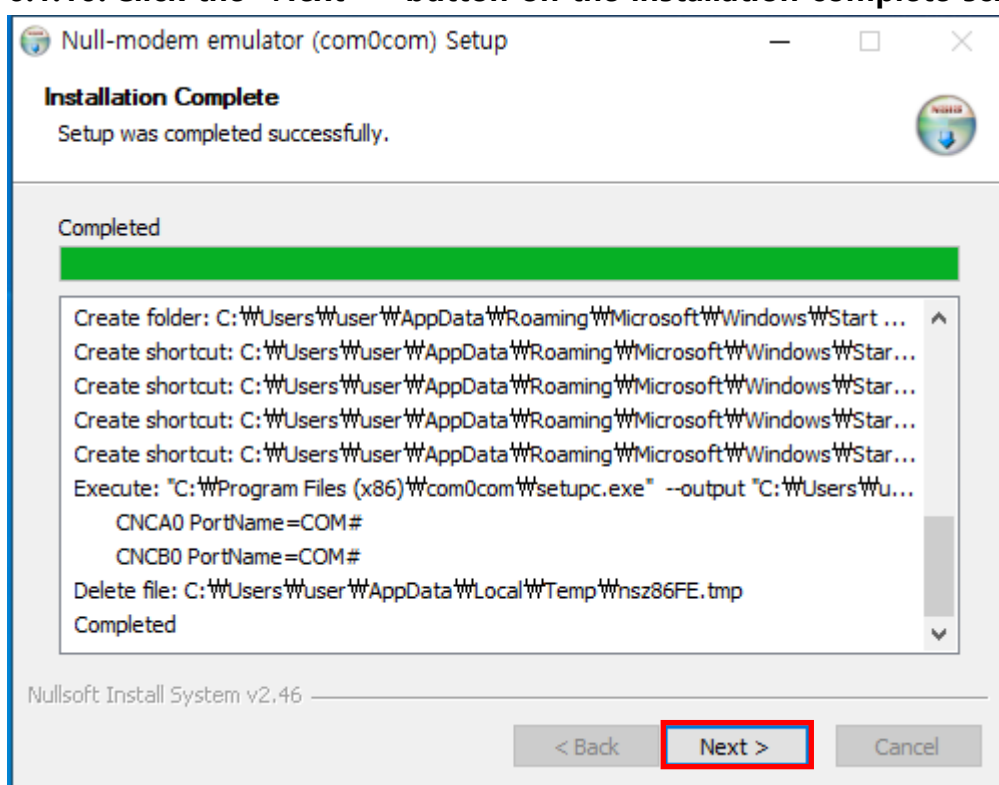


가상 COM 드라이버 삭제 시 아래와 같이 보여지는 경우 “계속(C)” 버튼을 클릭하여 진행합니다.

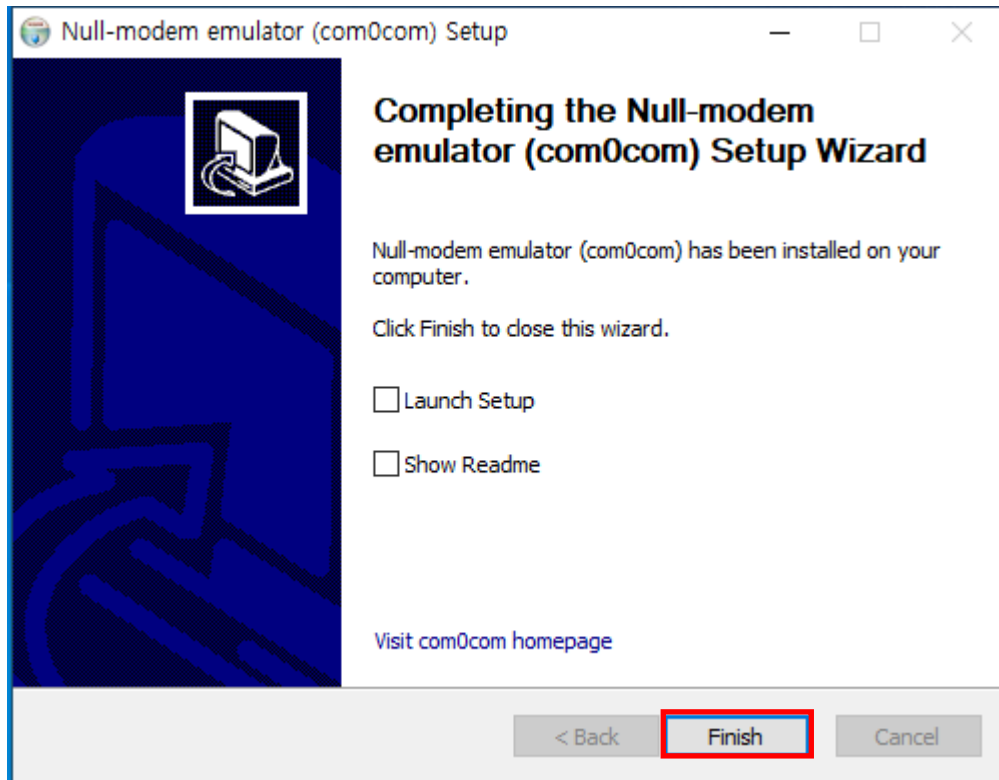
**6.1.9. After performing the installation process from 6.1.2 to 6.1.8 once more, the driver installation is complete when the completion window appears one the Windows tray as shown below.**



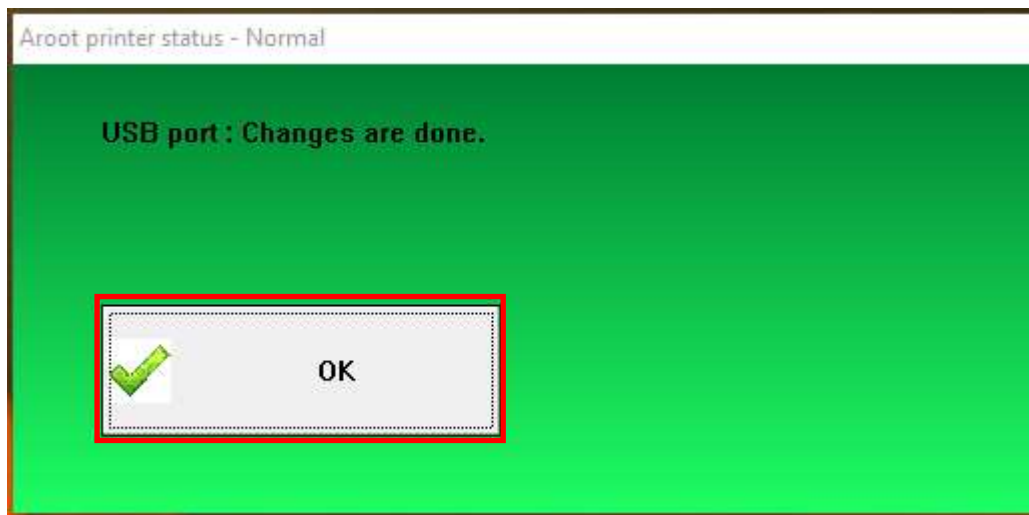
**6.1.10. Click the “Next >” button on the installation complete screen.**



6.1.11. Click the “Finish” button on the completion screen to exit.



6.1.12. When the below screen appears when it is completed normally, click the “OK” button.





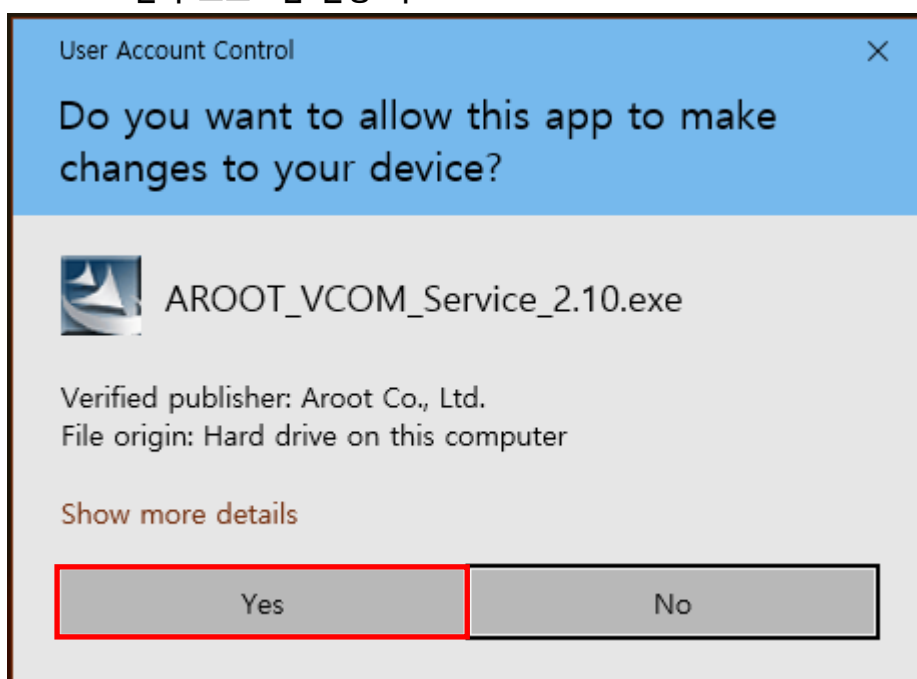
### 7. Required check items for installation/Uninstallation

- Notes on installation/uninstallation.

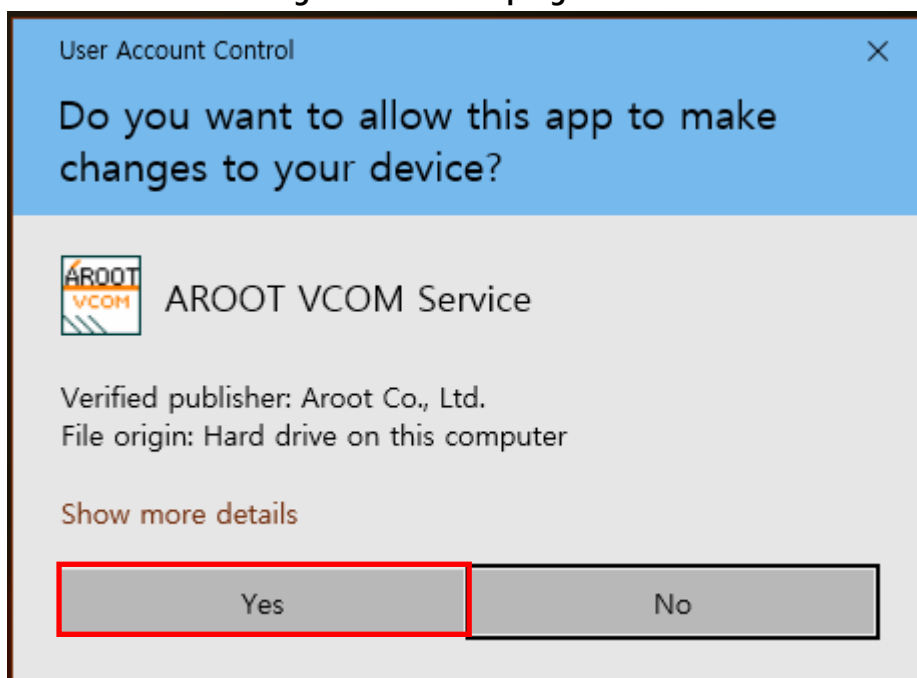
#### 7.1. Required Checks

- If User Account Control is enabled and the below screen appears when installing and running the program, click the "Yes" button.

<<< 설치 프로그램 실행 시 >>>

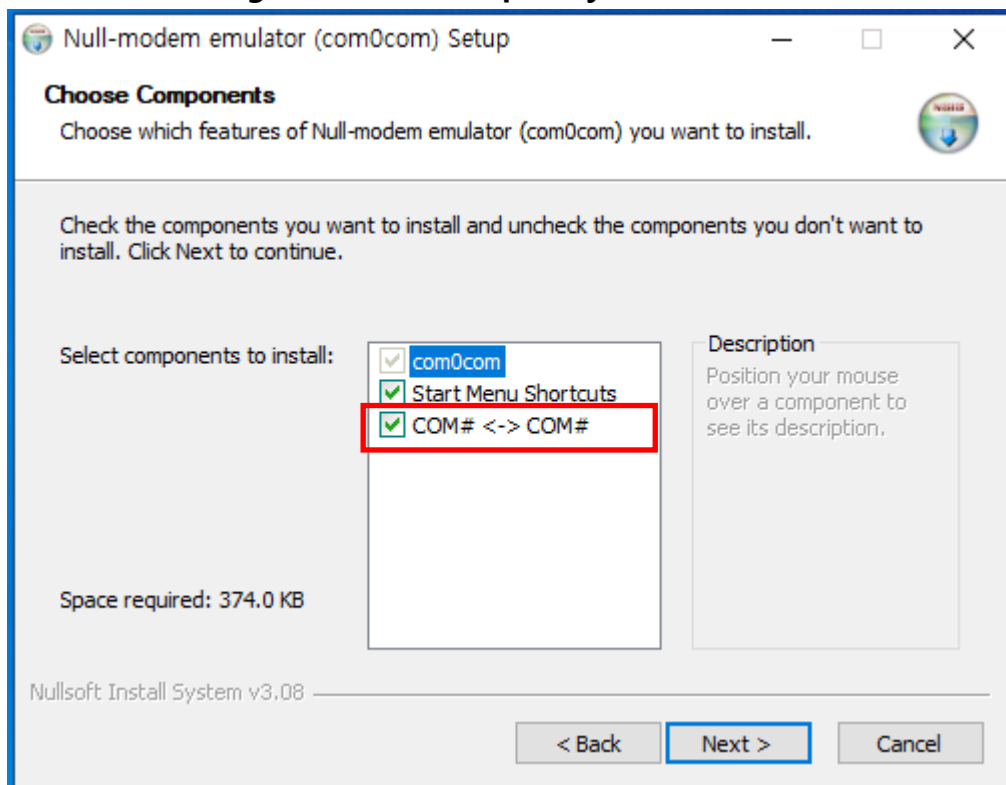


<<< When running VCOM service program >>>

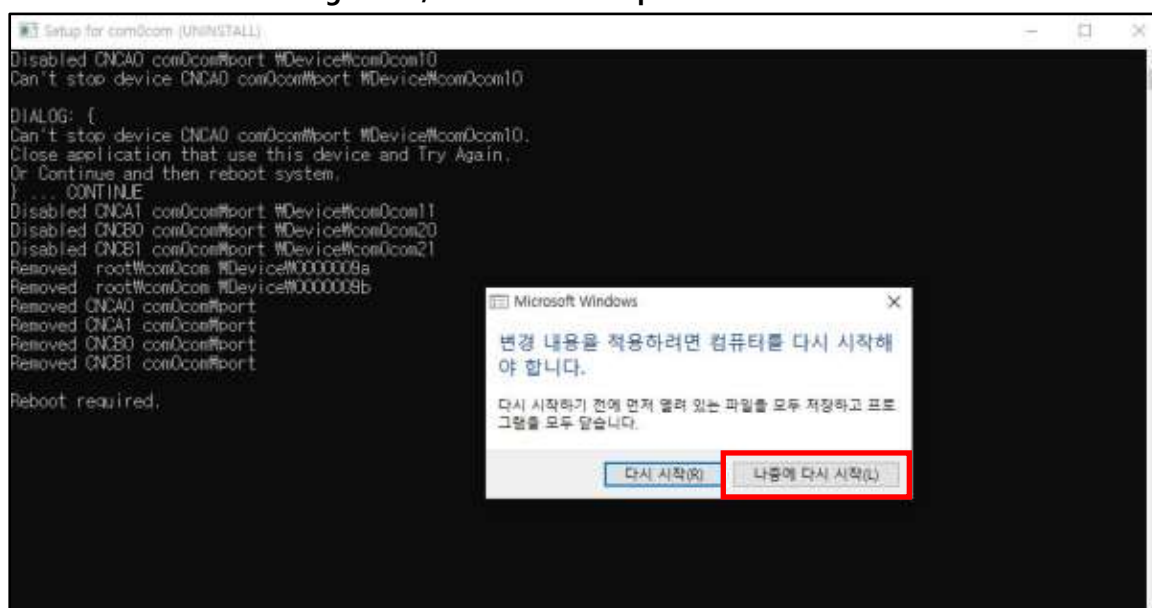


## SEWOO Virtual COM Port Print Service

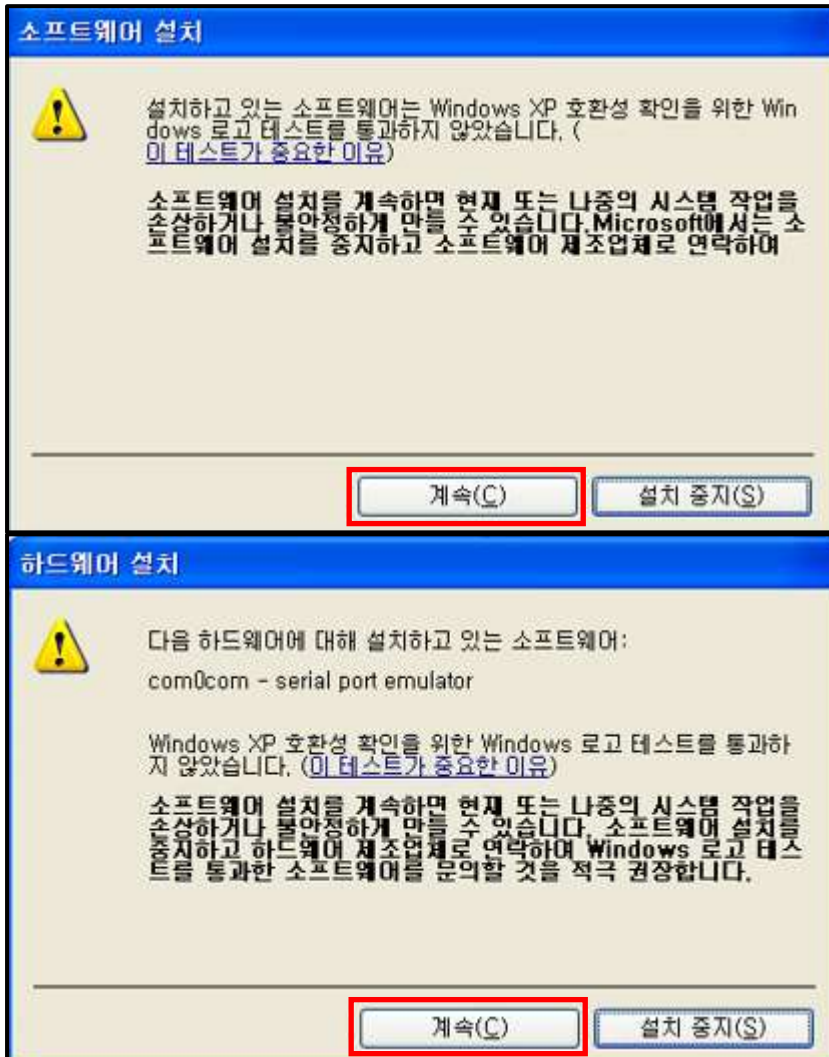
- When adding a virtual COM port, you must select "COM# <-> COM#".



- When adding a port or deleting an application, if the application is using the virtual COM port, the following message is displayed. In this case, click the "Restart Later (L)" button. After shutting down, reboot the computer.



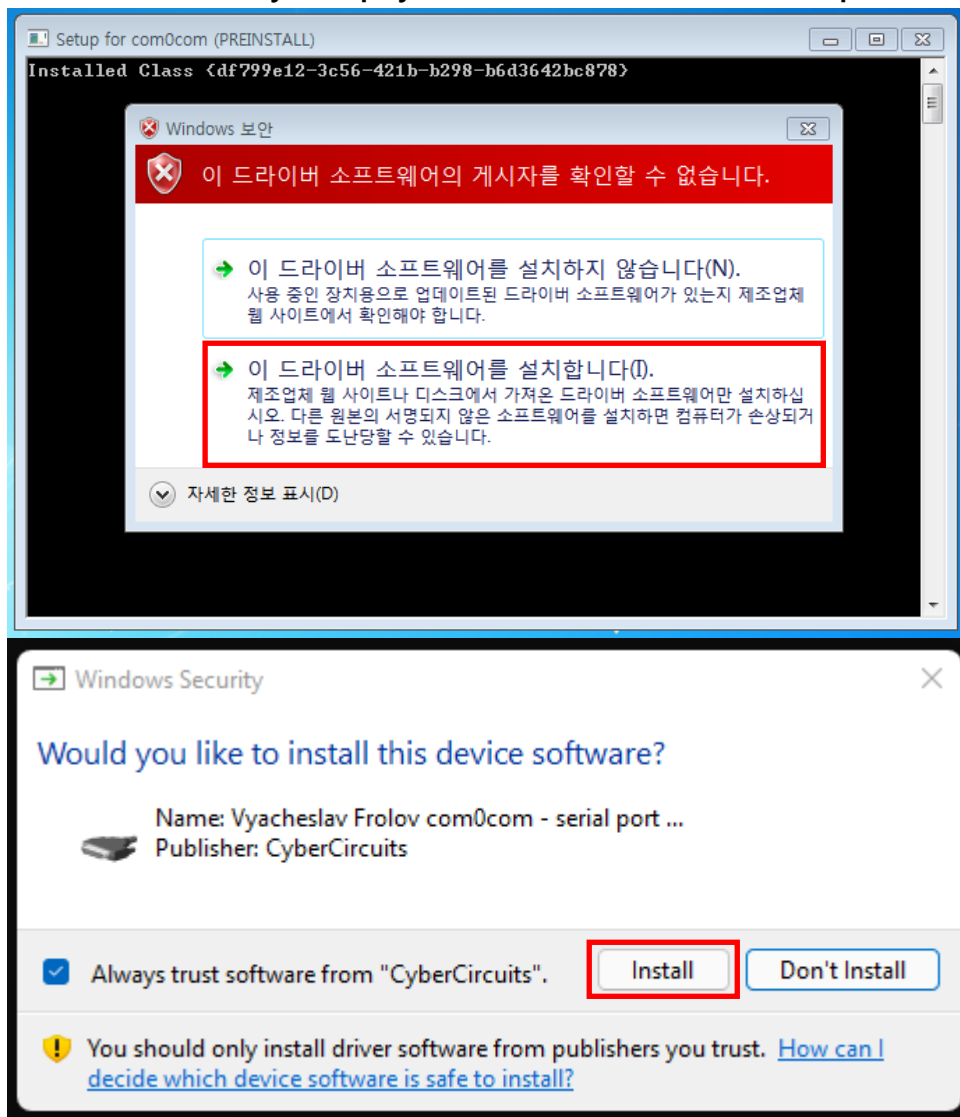
- When adding a virtual COM port in Windows XP, if the compatibility check and Hardware installation windows is shown as below, click the "Continue(C)" button to proceed.



가상 COM 드라이버 삭제 시 아래와 같이 보여지는 경우 "계속(C)" 버튼을 클릭하여 진행합니다.

## SEWOO Virtual COM Port Print Service

- When adding a virtual COM port driver in Windows 7 or later, if a window related to Windows security is displayed as below, click the red box to proceed.



## SEWOO Virtual COM Port Print Service

- When the virtual COM driver is deleted, if the following is displayed, click the "Continue(C)" button to proceed.

